

COMPILED FROM 7.5 MINUTE TOPOGRAPHIC QUADRANGLES OF THE
U.S. GEOLOGICAL SURVEY

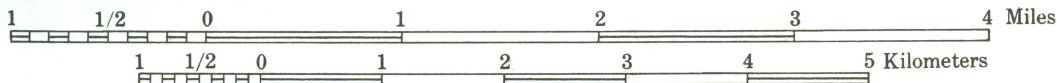
1956 (TOPOGRAPHIC BASE)

1977 (REVISED CULTURE)

1992 (LIMITED REVISION)

REVISED BY JAMES P. REGER

Scale 1:62500



Contour interval 20 feet

Numbered ticks indicate the 10,000 foot Maryland State Grid of 1939
constructed on the 1927 North American Datum (NAD27)

The last three digits of the grid numbers are omitted

Datum is mean sea level

